

PART OF THE NE. 1/4, OF SECTION 28, T.6N., R.2W., S.L.B. & M.

796

WINSTON PARK SUBDIVISION

IN WEBER COUNTY

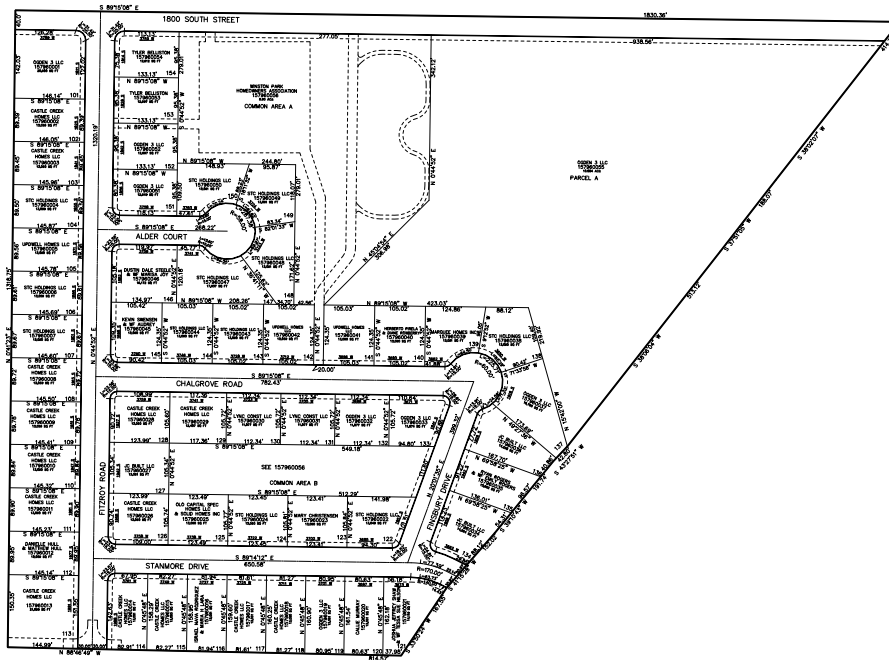
TAXING UNIT: 514

SCALE 1" = 200'

SEE PAGE 78-1

SEE PAGE 78-1

SEE PAGE 78-1



SEE PAGE 78-1

10' UTILITY & DRAINAGE EASEMENTS EACH
SIDE OF PROPERTY LINES AS INDICATED
BY DASHED LINES EXCEPT AS OTHERWISE
SHOWN.

FOR COMPLETE SURVEY DATA SEE
ORIGINAL DEDICATION PLAT IN
BOOK 93, PAGE 57-58 OF RECORDS.